



**WEST HALL**

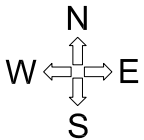
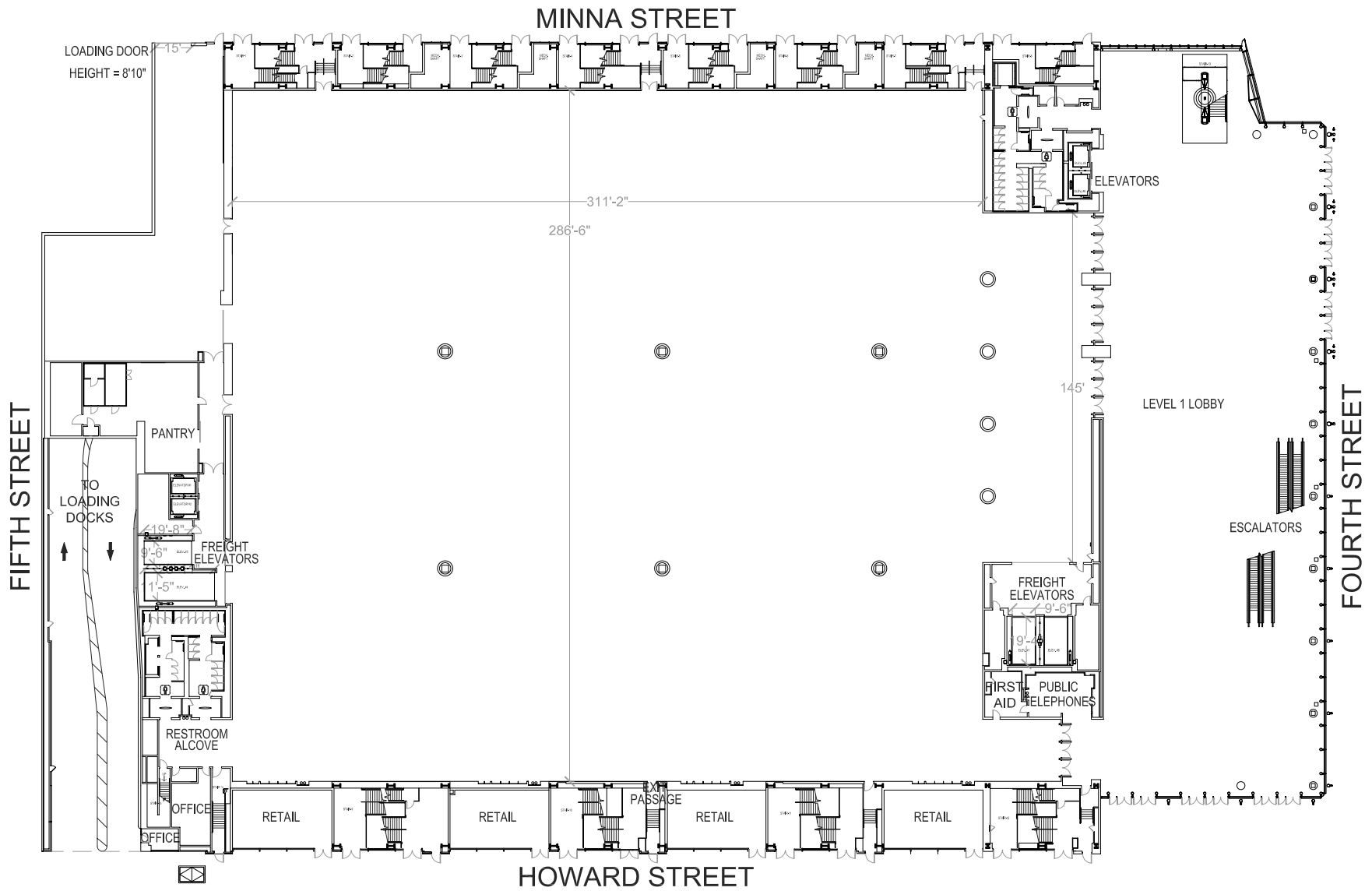
**ALL LEVELS**

**FLOOR PLANS  
&  
UTILITY PLANS**

Every effort has been made to ensure the accuracy of all information contained on this floorplan, however no warranties, either expressed or implied, are made with respect to the plan. If the location of building columns, utilities or other architectural components of the facility is a consideration in the use of the space, it is the sole responsibility of the user to physically inspect the facility to verify all dimensions and locations.

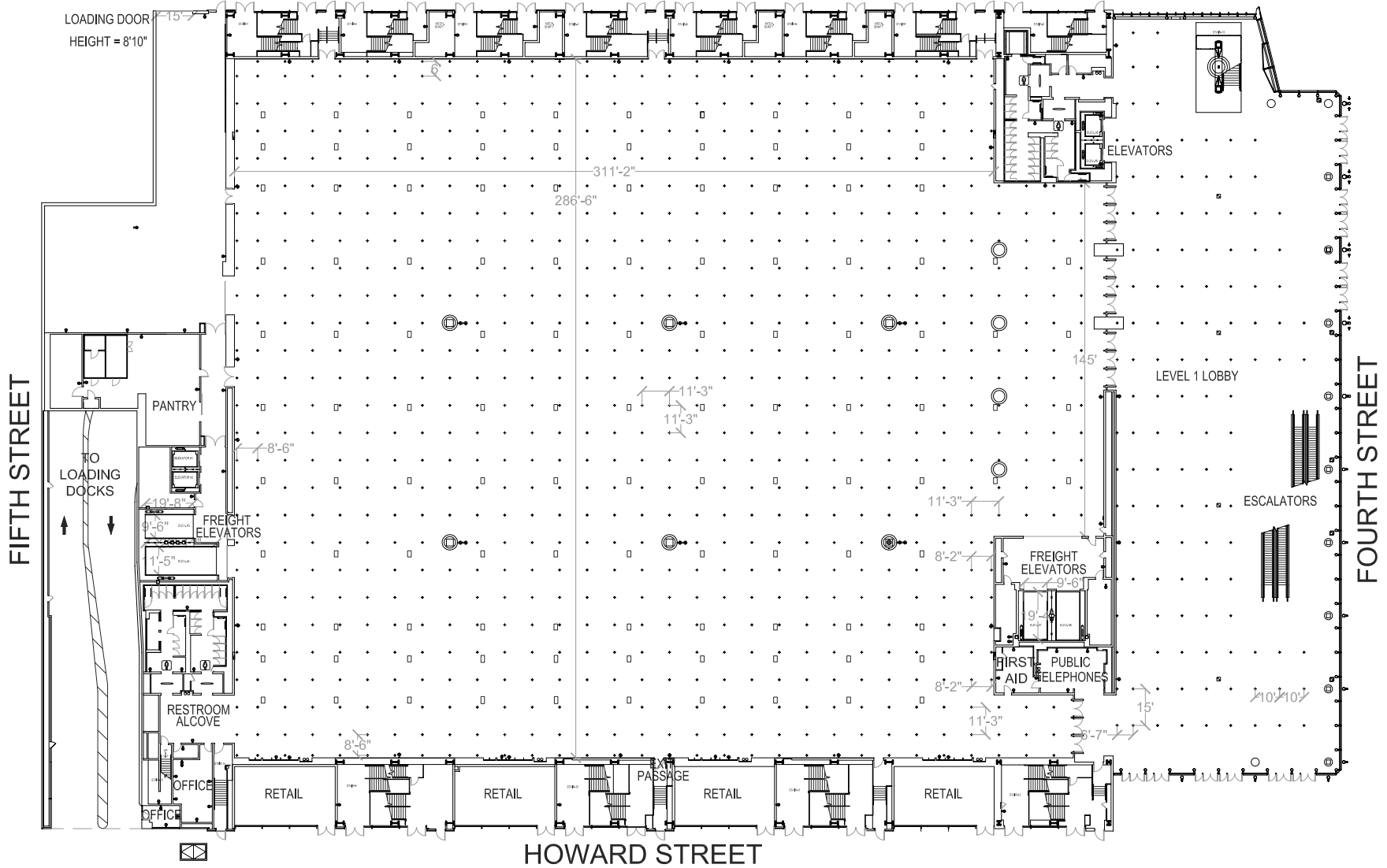
# TABLE OF CONTENTS

WEST HALL LEVEL 1 FLOORPLAN NO AIRWALLS.....	1
WEST HALL LEVEL 1 UTILITY PLAN NO AIRWALLS.....	2
WEST HALL LEVEL 2 FLOORPLAN WITH AIRWALLS.....	3
WEST HALL LEVEL 2 UTILITY PLAN WITH AIRWALLS.....	4
WEST HALL LEVEL 2 FLOORPLAN NO AIRWALLS.....	5
WEST HALL LEVEL 2 UTILITY PLAN NO AIRWALLS.....	6
WEST HALL LEVEL 3 FLOORPLAN WITH AIRWALLS.....	7
WEST HALL LEVEL 3 UTILITY PLAN WITH AIRWALLS.....	8
WEST HALL LEVEL 3 FLOORPLAN NO AIRWALLS.....	9
WEST HALL LEVEL 3 UTILITY PLAN NO AIRWALLS.....	10



WEST HALL LEVEL 1 FLOOR PLAN

MINNA STREET



LOADING DOOR  
HEIGHT = 8'10"

ELEVATORS

LEVEL 1 LOBBY

ESCALATORS

FREIGHT ELEVATORS

FIRST AID  
PUBLIC TELEPHONES

FOURTH STREET

FIFTH STREET

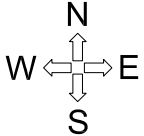
HOWARD STREET

**ELECTRICAL LEGEND**

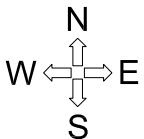
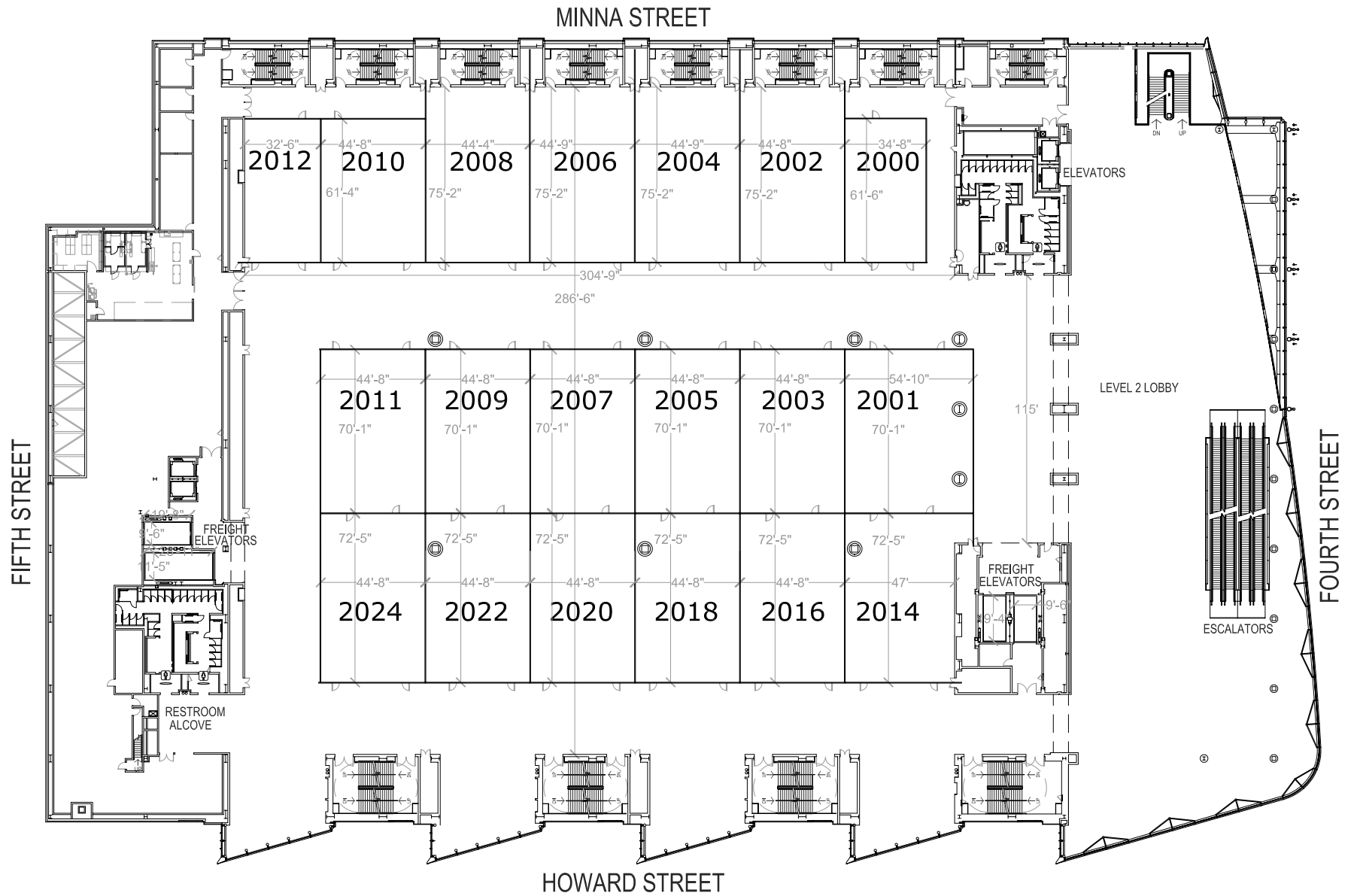
- PODIUM FLOOR POCKET
- 30 AMP HUBBEL TWISTLOCK / 20 AMP QUADPRUPLEX OUTLET / TELCOM
- 20 AMP DUPLEX OUTLET
- 250 AMP DISCONNECT @ 480 VOLTS
- FLOOR POCKET J BOX

**RIGGING NOTES:**

- + 2000LB RIGGING EYEBOLT POINT
- RIGGING EYEBOLT POINTS ARE RATED AT 2000LBS IN ANY DIRECTION
- HEIGHT FROM FLOOR TO CEILING = 27'
- HEIGHT FROM FLOOR TO BOTTOM OF EYEBOLT = 26'8"



WEST HALL LEVEL 1 UTILITY PLAN



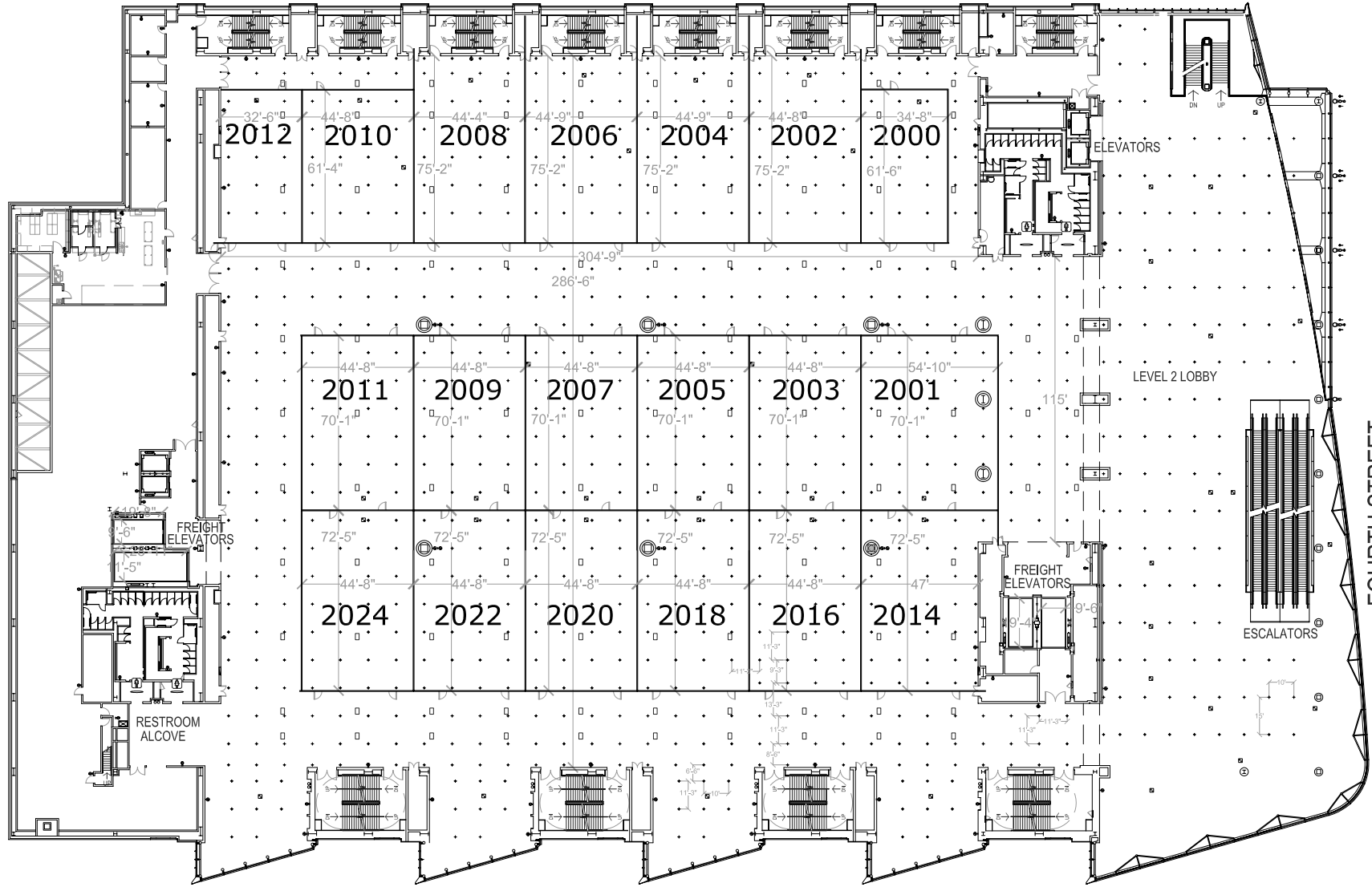
**WEST HALL LEVEL 2 FLOOR PLAN WITH AIRWALLS**

MINNA STREET

FIFTH STREET

FOURTH STREET

HOWARD STREET

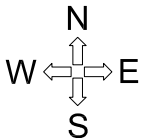


ELECTRICAL LEGEND

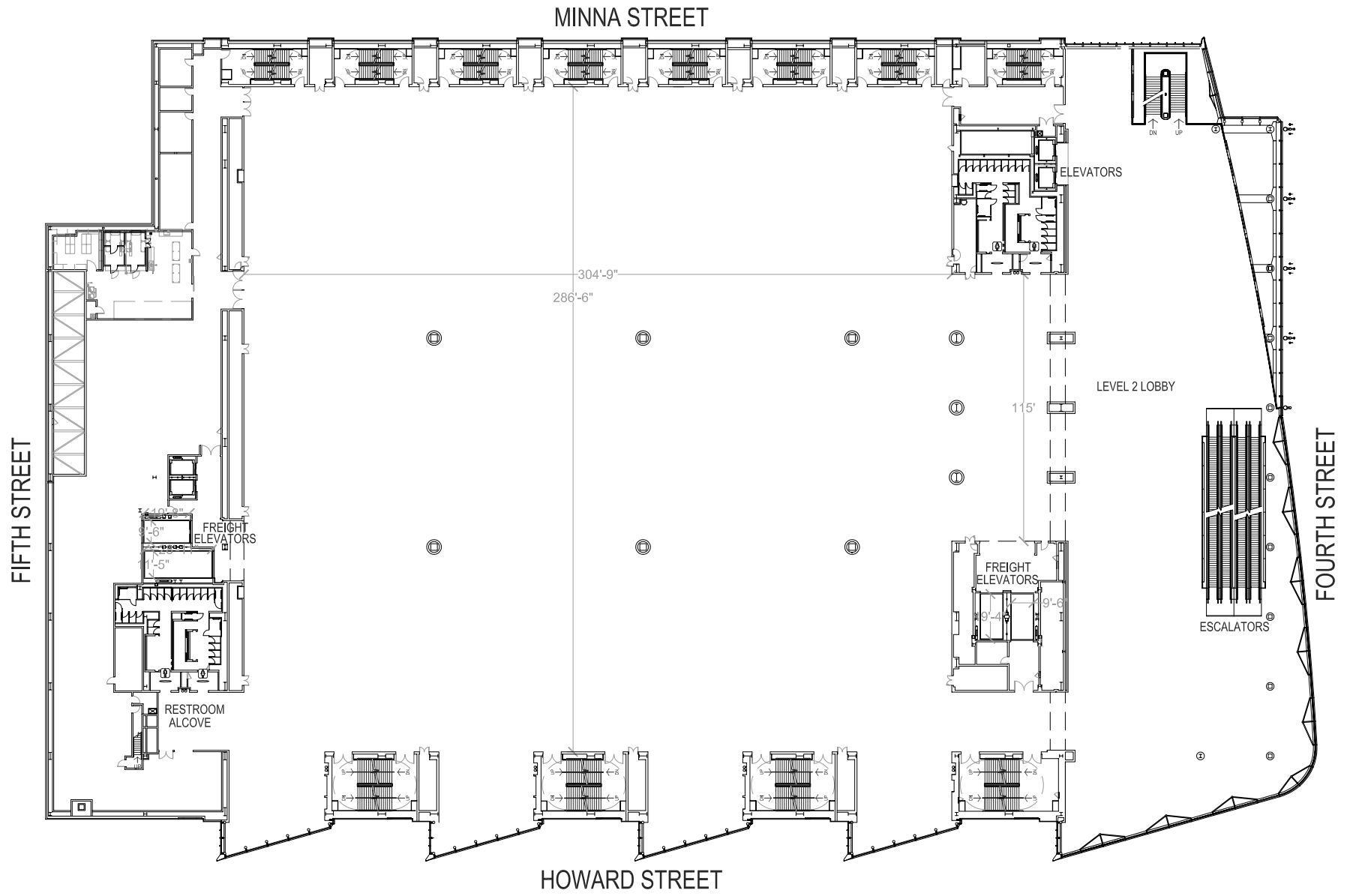
- ▣ PODIUM FLOOR POCKET
- 30 AMP HUBBEL TWISTLOCK / 20 AMP QUADPRUPLEX OUTLET / TELCOM
- 20 AMP DUPLEX OUTLET
- ⏏ 250 AMP DISCONNECT @ 480 VOLTS
- FLOOR POCKET J BOX

RIGGING NOTES:

- + - 2000LB RIGGING EYEBOLT POINT
- RIGGING EYEBOLT POINTS ARE RATED AT 2000LBS IN ANY DIRECTION
- HEIGHT FROM FLOOR TO CEILING = 27'
- HEIGHT FROM FLOOR TO BOTTOM OF EYEBOLT = 26'8"



WEST HALL LEVEL 2 UTILITY PLAN WITH AIRWALLS



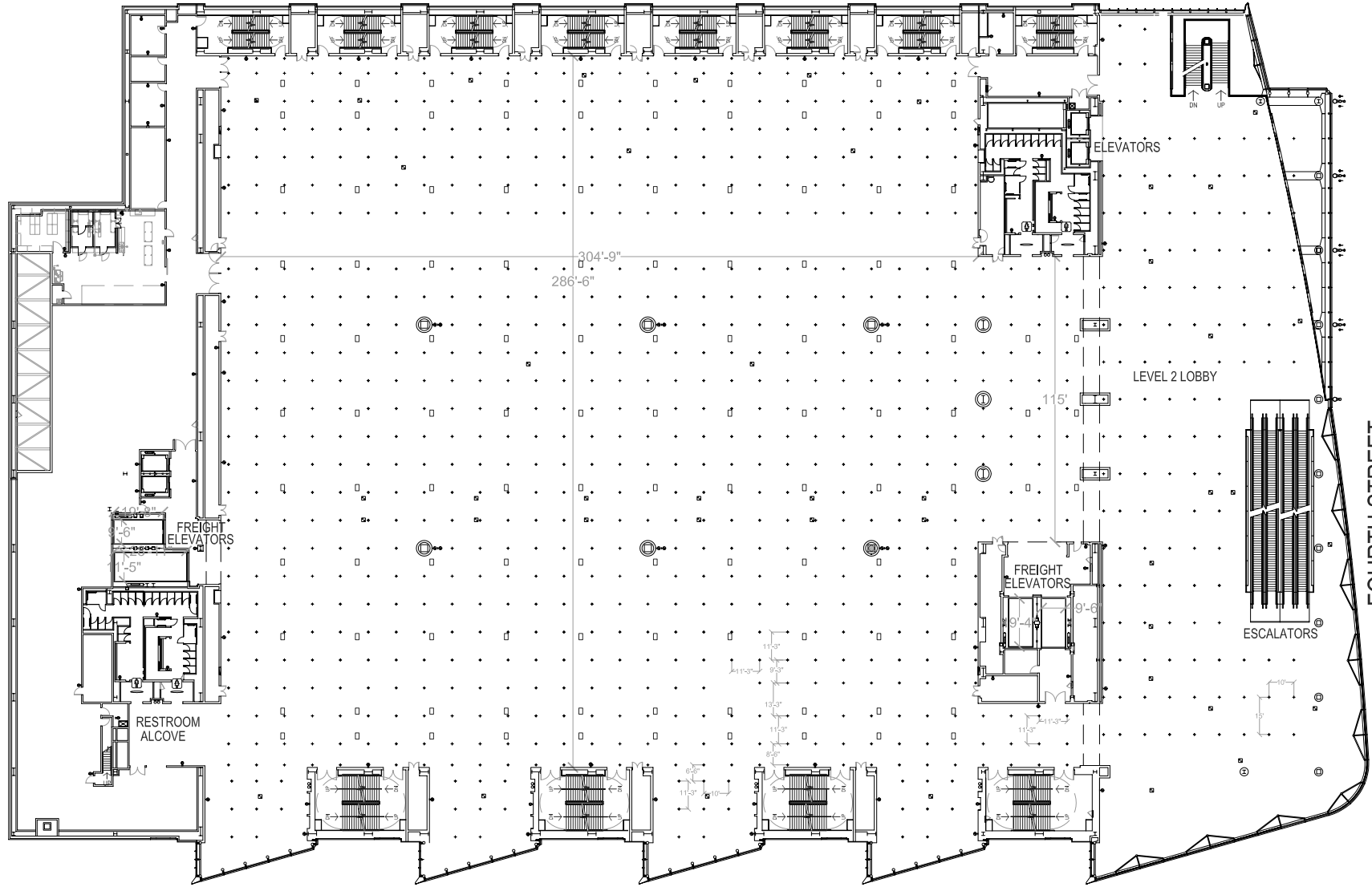
WEST HALL LEVEL 2 FLOOR PLAN

MINNA STREET

FIFTH STREET

FOURTH STREET

HOWARD STREET

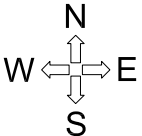


ELECTRICAL LEGEND

- PODIUM FLOOR POCKET
- 30 AMP HUBBEL TWISTLOCK / 20 AMP QUADPRUPLEX OUTLET / TELCOM
- ◌ 20 AMP DUPLEX OUTLET
- ⏏ 250 AMP DISCONNECT @ 480 VOLTS
- FLOOR POCKET J BOX

RIGGING NOTES:

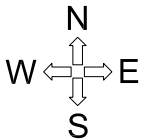
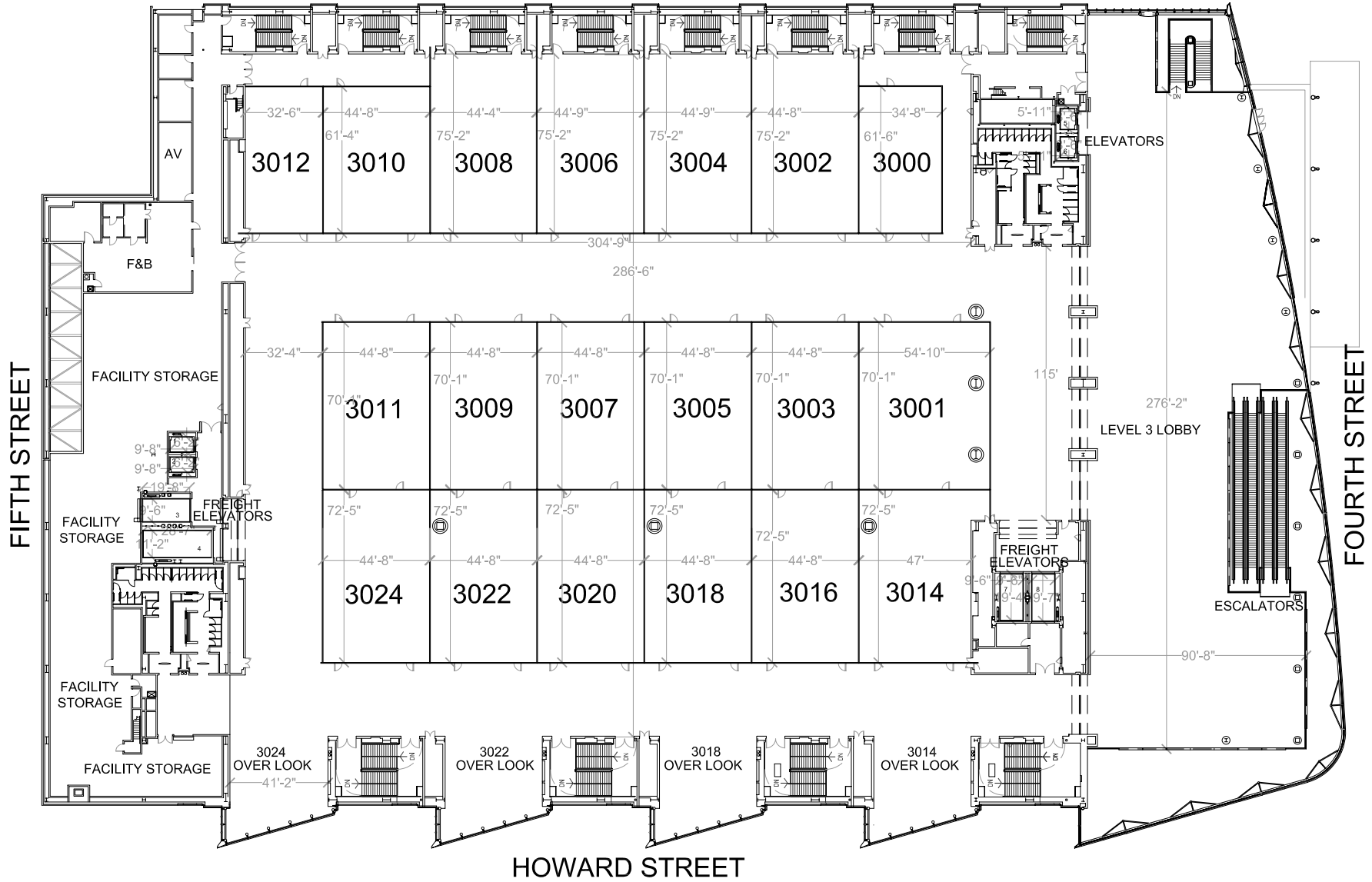
- + - 2000LB RIGGING EYEBOLT POINT
- RIGGING EYEBOLT POINTS ARE RATED AT 2000LBS IN ANY DIRECTION
- HEIGHT FROM FLOOR TO CEILING = 27'
- HEIGHT FROM FLOOR TO BOTTOM OF EYEBOLT = 26'8"



WEST HALL LEVEL 2 UTILITY PLAN

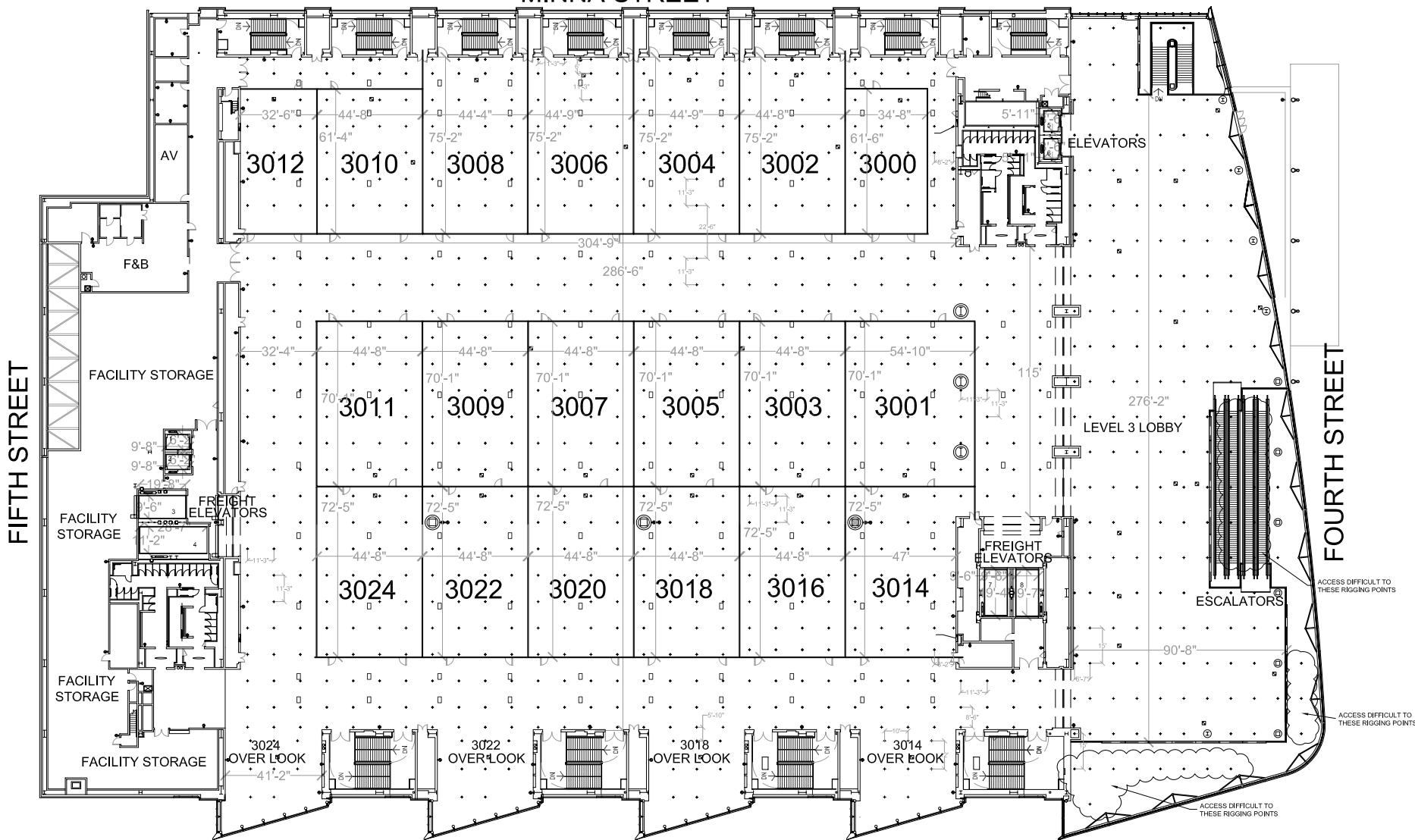


MINNA STREET



WEST HALL LEVEL 3 FLOOR PLAN WITH AIRWALLS

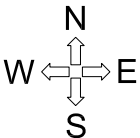
MINNA STREET



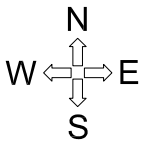
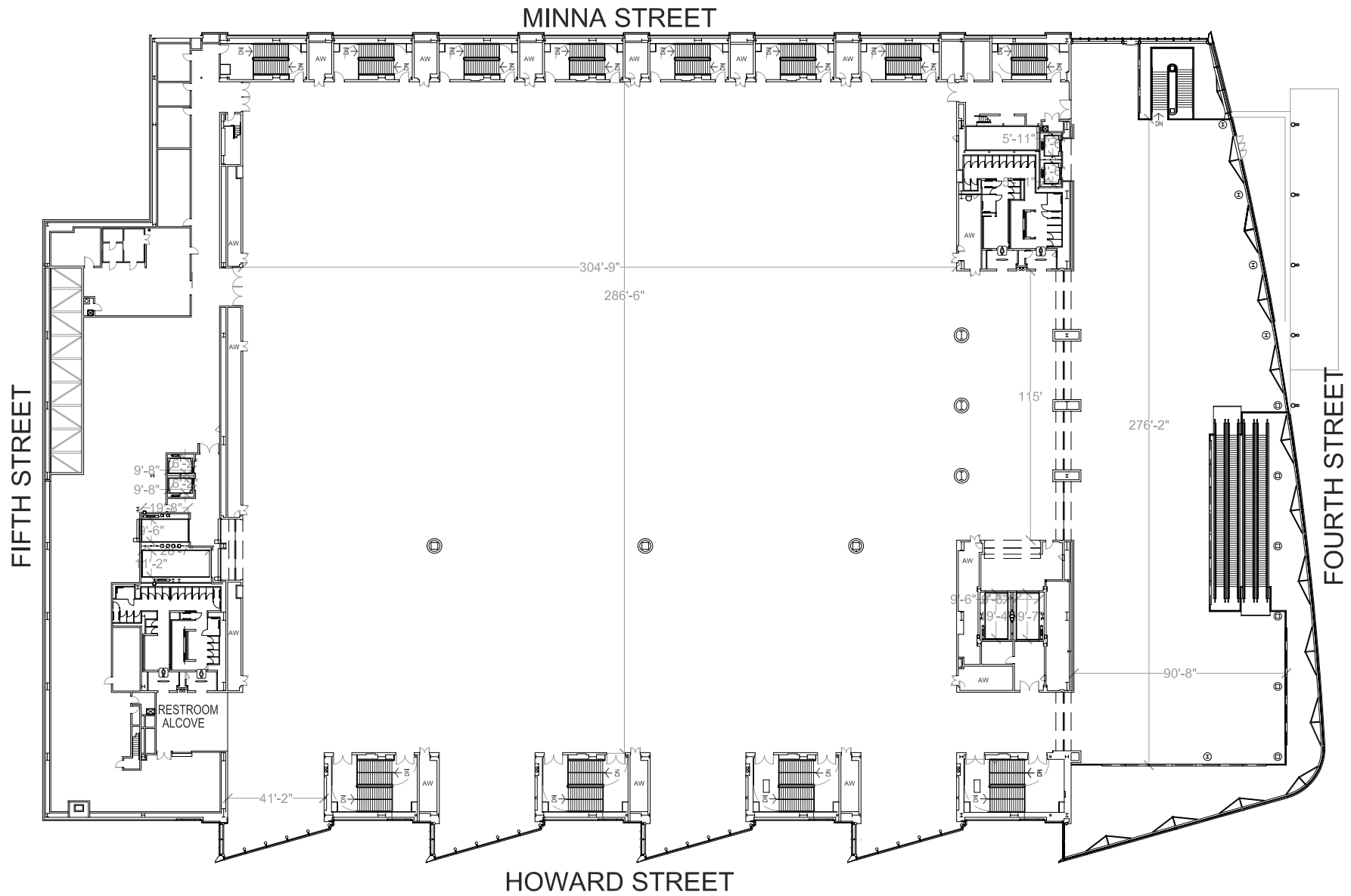
HOWARD STREET

ELECTRICAL LEGEND	
◻	PODIUM FLOOR POCKET
•	30 AMP HUBBEL TWISTLOCK / 20 AMP QUADPRUPLEX OUTLET / TELCOM
•	20 AMP DUPLEX OUTLET
⏏	250 AMP DISCONNECT @ 480 VOLTS
◻	FLOOR POCKET J BOX

RIGGING NOTES:	
+ -	2000LB RIGGING EYEBOLT POINT
-	RIGGING EYEBOLT POINTS ARE RATED AT 2000LBS IN ANY DIRECTION
-	HEIGHT FROM FLOOR TO CEILING = 27'
-	HEIGHT FROM FLOOR TO BOTTOM OF EYEBOLT = 26'8"



WEST HALL LEVEL 3 UTILITY PLAN WITH AIRWALLS



WEST HALL LEVEL 3 FLOOR PLAN

MINNA STREET

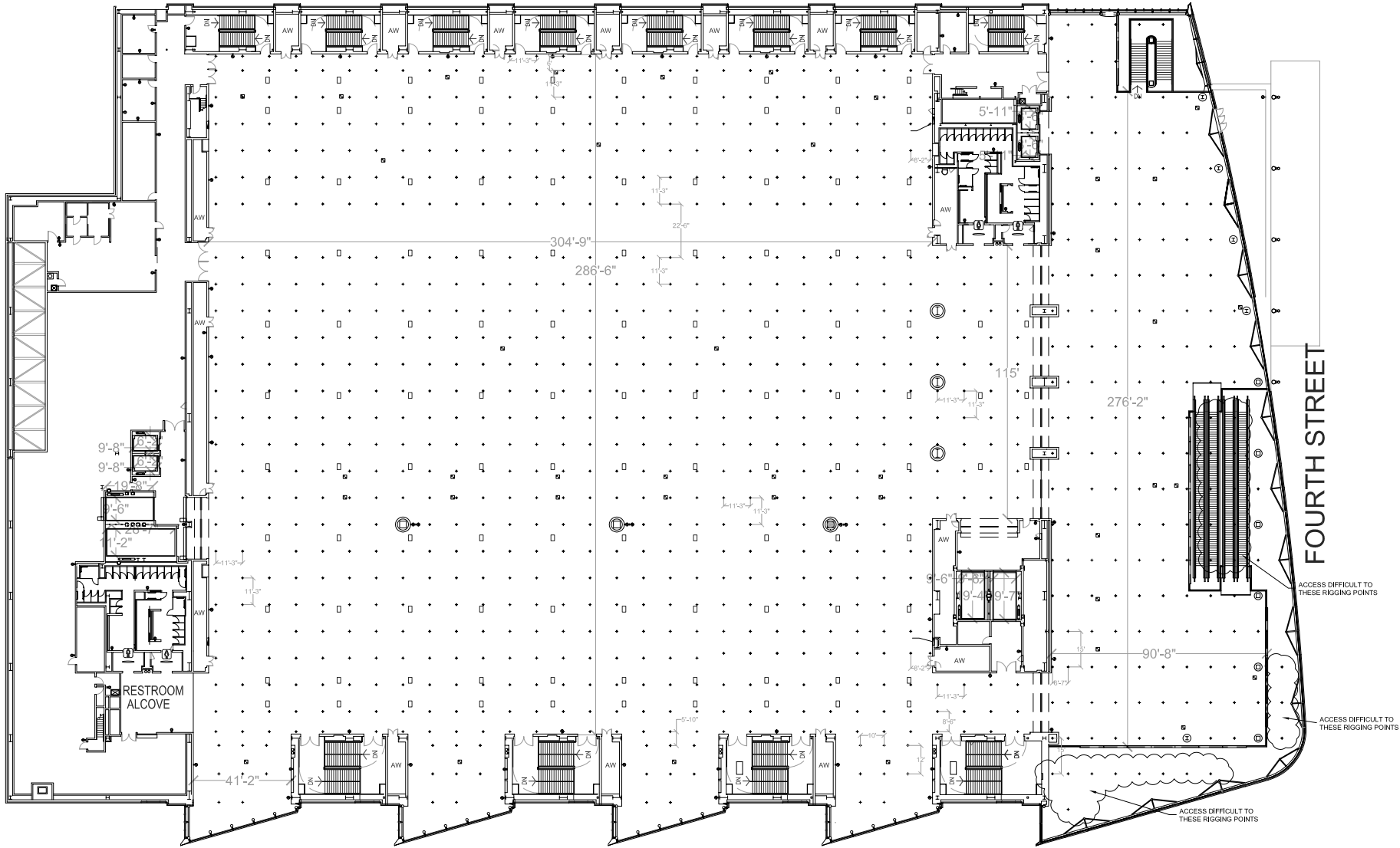
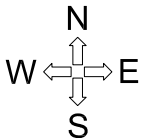
FIFTH STREET

FOURTH STREET

HOWARD STREET

ELECTRICAL LEGEND	
◻	PODIUM FLOOR POCKET
•	30 AMP HUBBEL TWISTLOCK / 20 AMP QUADPRUPLEX OUTLET / TELCOM
•	20 AMP DUPLEX OUTLET
⏏	250 AMP DISCONNECT @ 480 VOLTS
◻	FLOOR POCKET J BOX

RIGGING NOTES:	
+ -	2000LB RIGGING EYEBOLT POINT
-	RIGGING EYEBOLT POINTS ARE RATED AT 2000LBS IN ANY DIRECTION
-	HEIGHT FROM FLOOR TO CEILING = 27'
-	HEIGHT FROM FLOOR TO BOTTOM OF EYEBOLT = 26'8"



WEST HALL LEVEL 3 UTILITY PLAN