

Swiss support for International innovation and R&D co-operation

The Enterprise Europe Network
services

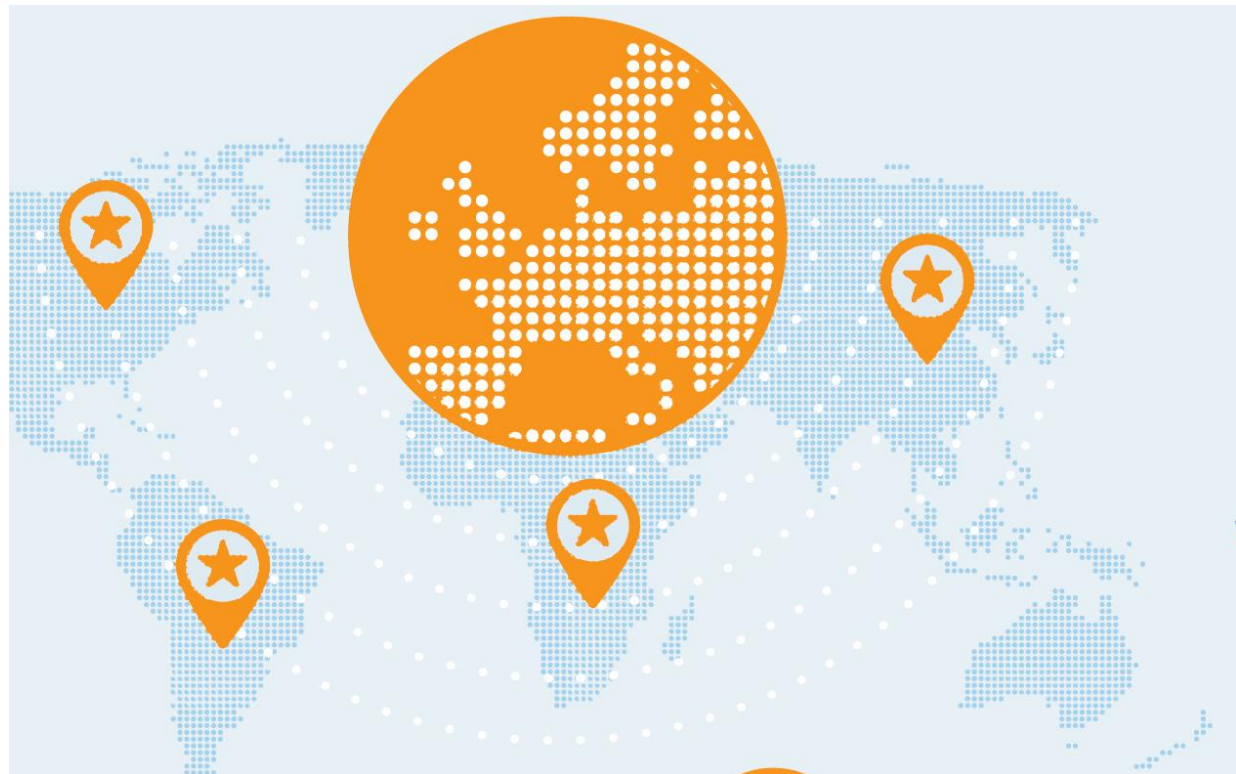
Enterprise Europe Network (EEN) group
Euresearch Head Office
SMEInnovation@euresearch.ch
+41 31 380 60 34



network

enterprise europe

- > 50 Countries
- > 600 Organisations
- > 4500 Experts
- 28 EU countries
+ China, Japan,
Norway,
Switzerland, USA, ...
- 7 people for
**technology
partnership** in
Switzerland



Partnering for research and innovation

Three possibilities for you via the EEN:

1. to find partners **exploiting** your technology / knowledge:
Technology Offer (**TO**)
2. to find partners **providing** a technological **solution** to your need: Tech Request (**TR**)
3. to offer your expertise for technology and **research cooperation** (e.g. consortia for research projects): Partner Search (**PS**)



“Connecting organisations”



network

enterprise europe

- EEN Instruments:
- profiles database
 - events
 - technology e-alerts

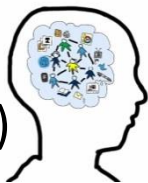
Swiss EEN advisor

International EEN advisor

Company visits
Individual advice

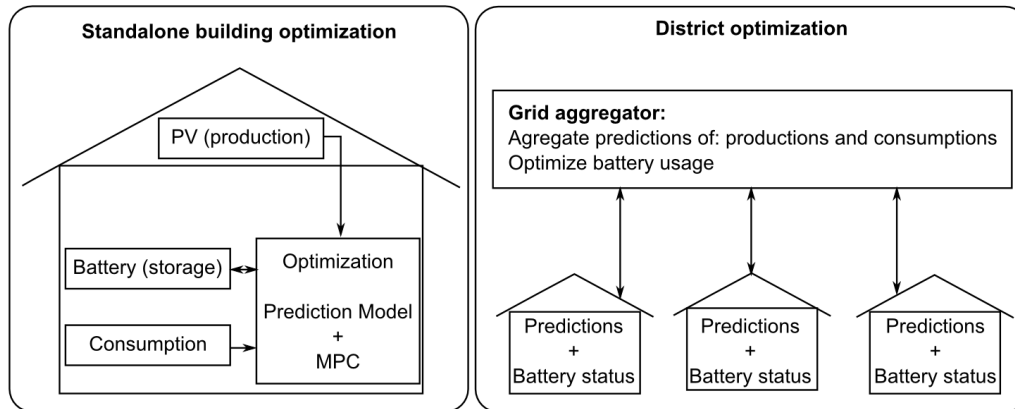
Technology offer
Technology request
Partner search

Client A
(Swiss researcher)



Client B
(e.g. German SME)

Example EEN Partnering (Technology Offer)



Model predictive control algorithm to optimally use the electric energy flows at building and district level, and lower the consumption and energy bills.

Who: Swiss research centre

Aim: find industrial partners *to apply and commercialize their algorithm*

4 months in the database
⇒ 7 active expressions of interest

Technology E-Alert: innovation and market watch – example:



According to your profile of interest for the Technology e-Alert of the Enterprise Europe Network we have the pleasure to send you the following technology profile:

Title: H2020 ICT-25-2015: Generic micro- and nano-electronic technologies: Probability based hardware/electronic/system development

Abstract: A UK research group expert in biologically-inspired computer architectures & sustainable energy generation and management seeks partners for the H2020 ICT-25-2015 call. The project will investigate the use of biological models to develop a new generation of computing platforms which will not be affected by limitations inherent in today's technology. Industry and research partners expert in computer architecture, semiconductors, applications, emerging technology and biological systems are sought.

For more details:

<http://www.enterprise-europe-network.ch/marketplace/index.php?file=bbs-show.php&bbsref=RDUK20140930001&id=1111&L=I2>

Brokerage Events: Efficient Networking



Register with your cooperation profile and choose who you wish to meet. We arrange the meetings for you.

- ➔ According to participant's feedback to similar events, over 50% of meetings end in further contacts!

Links

- www.swisseen.ch/database
- www.swisseen.ch/alert
- www.swisseen.ch/promotion
- www.swisseen.ch/events

een @ euresearch.ch