

## Venue

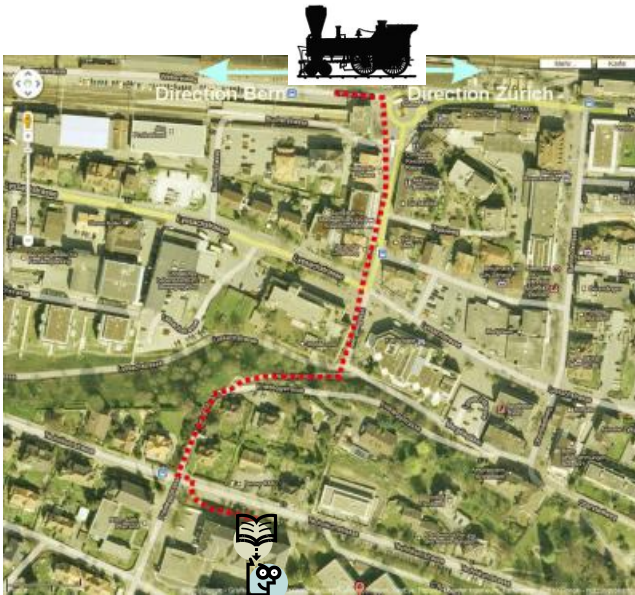
Bern University of Applied Sciences  
Institute for Applied Laser, Photonics and Surface Technologies ALPS  
Pestalozzistrasse 20, CH-3400 Burgdorf  
[www.alps.ti.bfh.ch](http://www.alps.ti.bfh.ch)

### By car from A1

Exit 39 „Kirchberg“ to Burgdorf, 2km  
If you use GPS: Type in „Technikumsstrasse 12“ and you will stop directly by the car park

### By air plane

From airport Geneva or Zuerich use railway to Burgdorf  
(timetable [www.sbb.ch](http://www.sbb.ch)), 5 minutes walk



## Accommodation

Hotel Berchtold, [www.berchtold-group.ch](http://www.berchtold-group.ch)  
Bahnhofstrasse 90, 3400 Burgdorf, +41 (0)34 428 84 28

Hotel Orchidee, [www.hotel-orchidee.ch](http://www.hotel-orchidee.ch)  
Schmiedengasse 20, 3400 Burgdorf, +41 (0)34 420 77 77

Hotel Stadthaus, [www.stadthaus.ch](http://www.stadthaus.ch)  
Kirchbühl 2, 3400 Burgdorf, +41 (0)34 428 80 00

Aemmestrand (B&B), [sommerursula@bluewin.ch](mailto:sommerursula@bluewin.ch)  
Schönauweg 12, 3400 Burgdorf, +41 (0)79 364 09 83 / +41 (0)34 422 90 63